

T5100 is modern design flush-mounting thermostat equipment with large stylish TN screen. It is used for electric, water, boiler heating. Carefully study this manual and make sure it is installed by qualified electrician.

### Parameter

Voltage: 220V/230V

Power consumption: 1W

Setting range: 5-40°C

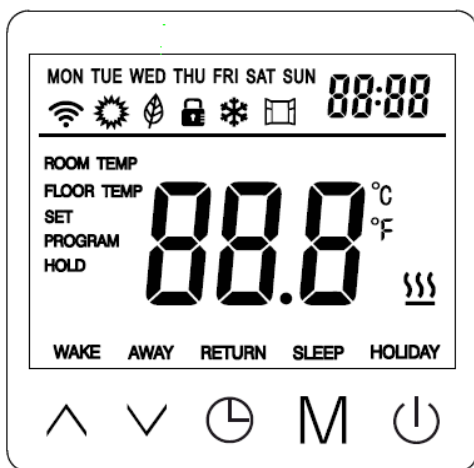
Temp deviation: 0.5,1,2,3

Protective range: IP21

Material: Anti-flammable ABS

Application: Built-in sensor, floor sensor

### Symbols display



Comfort mode	Eco Mode
<b>PROGRAM</b> Program mode	<b>HOLD</b> Temporary mode
<b>HOLIDAY</b> Holiday Mode	<b>WAKE AWAY</b> Period
<b>88:88</b> Time	MON TUE WED THU FRI SAT SUN Days
<b>88.8</b> Temperature	<b>ROOM TEMP</b> Room temperature
<b>SET</b> Set temperature	<b>FLOOR TEMP</b> Floor temperature
Lock	Open Window
Anti-freeze	Heat
<b>M</b> Mode	Clock
On/off	Up
Down	WIFI

### Operation

1. On/OFF: press key to turn on, press again to off
2. Lock: on main screen, press key 3 second to lock, press 3 second again to unlock
3. Floor temperature check: on main screen, Press 3 second to check floor temperature at air sensor mode
4. Mode: on main screen, press **M** key to choose mode program-comfort-eco-holiday mode

At Comfort mode: press or to set temperature, need not to confirm, thermostats will always operate under set-temperature. Default 23°C, max 35°C

At eco mode: press or to set temperature, need not to confirm,

thermostats will always operate under set-temperature. Default 18°C, max 35°C

At program mode: thermostat will operate under standard program indicated in settings F2.

Temporary mode: at program mode, press or to set temperature, thermostats enter into temporary mode, thermostats will operate under set-temperature until next heating period.

At holiday mode: press or to set temperature, need not to confirm, thermostats will operate under set-temperature according to days set in advanced setting F4. Default 10°C, max 20°C.

4. Date and time: press to go to week and time screen. Use and to select value, use **M** to confirm.

### Setting

Press for to turn off thermostat, press **M** to go F1. use and to select F1, F2, F3, F4, F5.

Item	Setting	Explanation
F1	Date,Time setting	Modify date, time
F2	Program	Modify time, temperature of 4 program period
F3	Read operation time	Read working time per day, month, year
F4	Advanced setting	Modify advanced setting
F5	WIFI connection	000: No reset 001: Reset and WIFI in EZ mode 002: Reset and WIFI in Ap mode

#### F1: Date, Time Setting

Select F1, press **M** to enter, press or to set day, hour, min, press **M** to confirm. After finish setting, press to leave or thermostats will go back main screen 5 second late.

#### F2: Program

Select F2, press **M** to enter, press or to select day and program period, press **M** to enter, use or to set time and temperature, use to exit or thermostats will go back main screen 5 second late.

#### Standard program:

DAY				
Mon-Fri	WAKE 06:00 20°C	LEAVE 08:30 15°C	BACK 17:00 20°C	SLEEP 23:00 15°C
Sat-Sun	WAKE 06:00 20°C	LEAVE 08:30 20°C	BACK 17:00 20°C	SLEEP 23:00 15°C

#### F3: Read operated time

Select F3, press **M** to enter, press or to see operation time per day,month,year.

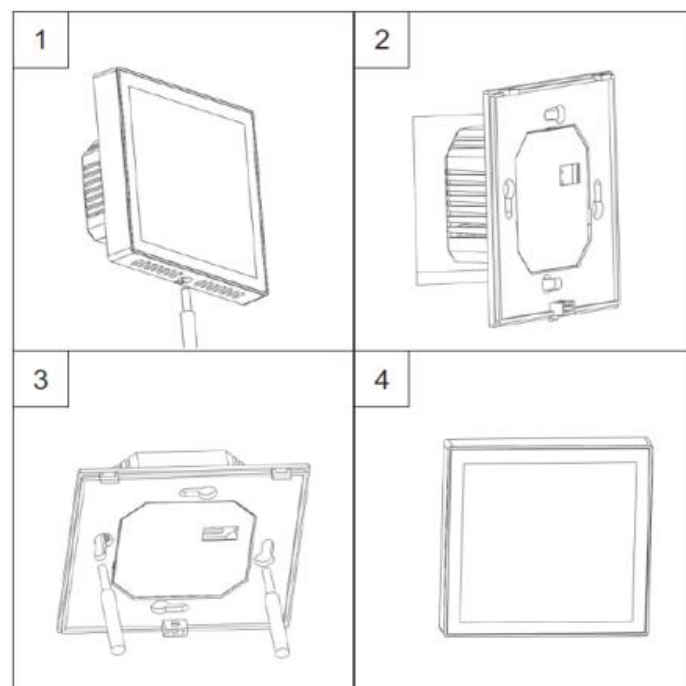
Eg: 10:17 03 mean thermostat totally operate 3 days 10hours 17mins. Press **M** to leave.

#### F4: Advanced setting

Note: Menu here should be modified by installer or qualified people. Select F4, press **M** to enter, Use **M** to select item, Use or to modify value. press to leave.

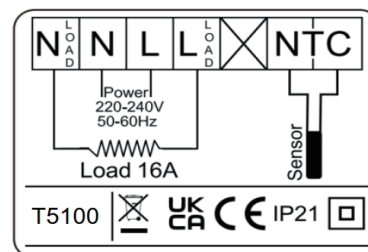
Item	Default Value	Range
01: Sensor Selection	01	01: Built-in& floor limit 02: built-in sensor 03: Floor sensor
02: Room temperature calibration	0°C	-5°C~5°C
03: Floor temperature calibration	0°C	-5°C~5°C
04: Floor. Limit	35°C	5°C~60°C
05: Schedule	5-1-1	5-1-1/7
06: Adaptive start	OFF	ON/OFF
07: Adaptive start time	20mins	0-40mins
08: Open window	OFF	ON/OFF
09: Sensor type	10K	3K/5K/6.8K/10K/12K 15K/20K/22K/33K/47K
10: Anti-freeze function	OFF	ON/OFF
11: Holiday time	1 day	1-99 days
12: Temp deviation	1°C	0.5°C,1°C,2°C,3°C
13: Display Precision	0.5°C	0.5°C,0.1°C
14: Operation step	0.5°C	0.5°C,0.1°C,1°C
15: Reset	No	No/Yes
16: Display when thermostat OFF	02	01: Show OFF 02: Show Temperature 03: Nothing
17: Temperature unit	°C	°C/°F
18: Thermostat state at power-on (after power-off)	01	01: Same to state before power off 02: Turn off thermostat 03: Turn on thermostat & work with mode before power drop

## Mounting Steps:



## Wiring Diagram:

Note: the thermostats should be only applied full load 3200W in 2500m height above sea level



F5: WIFI connection-not available for non-wifi thermostat.